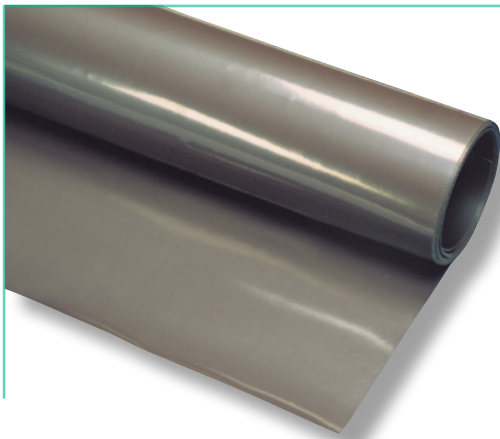




Mag-Fix™

Made of a permanent magnetic material (ferrite) and a plastic binder, Mag-Fix™ magnetic sheets can be used in a wide variety of situations. Available in rolls or cut to your required size, magnetic sheets are ideal print media matching the specific needs of Point-Of-Purchase display. Magnetic sheeting can also easily be turned into a quick-change display solution when used with Ferro-Flex™ print media.

Mag-Fix™ magnetic sheets are available in different versions and formats with different magnetic properties.



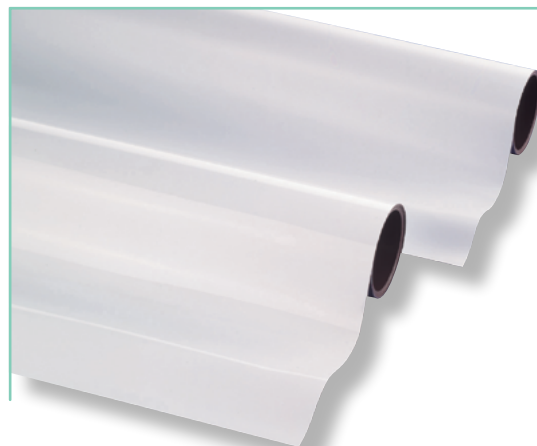
■ Plain flexible magnetic sheet

Plain flexible magnetic sheets are used mainly in applications in which a printed media is directly laminated on the magnetic sheet by the customer.



■ Adhesive magnetic sheet

Ideal to make magnetic any non-metallic base (wall, dividers, etc..) and thus create a quick-change display solution suitable for use with ferrous Ferro-Flex™ print media.



■ Magnetic sheet with white vinyl (gloss/matt)

Printable and easily cut with scissors, magnetic sheets with white vinyl are provided with a special coating to prevent scratches on the support surface.



Magnet
Attractive technology.

ZI de Villers - Route d'Hussigny
54920 Villers la Montagne (France)

Phone: +33 (0)3 82 26 06 00
Fax: +33 (0)3 82 26 06 06

info@blsmagnet.com
www.blsmagnet.com

Plain flexible magnetic sheet

Art. N°	thickness mm	width mm	length m	pull force g/cm ²
705.002/031	0,40	615	30	19
705.004/031	0,40	1000	20	19
705.008/031	0,50	615	30	26
705.010/031	0,50	1000	20	26
705.023/031	0,75	615	30	44
705.027/031	0,80	1000	10	46
705.038/031	1,00	615	15	57

Magnetic sheet with white vinyl (gloss/matt)

Art. N°	thickness mm	width mm	length m	pull force g/cm ²
705.108/000	0,50	615	30	19
705.113/000	0,60	615	10	26
705.114/000	0,60	615	30	26
705.116/000	0,60	1000	20	26
705.129/000	0,85	615	30	44
705.131/000	0,85	615	10	44
705.133/000	0,85	1000	10	46
705.141/000	1,10	615	15	57

Self-adhesive magnetic sheet

Virtually all types of magnetic sheets can be supplied with a self-adhesive layer. In the standard version, the following types are available.

Art. N°	thickness mm	width mm	length m	pull force g/cm ²
705.008/030	0,50	615	30	26
705.023/030	0,75	615	30	44
705.054/030	1,50	1000	10	75

Anisotropic (stronger pull force)

Art. N°	thickness mm	width mm	length m	pull force g/cm ²
708.008/131	0,50	615	30	34
708.023/131	0,75	615	30	55
708.038/131	1,00	615	15	71
708.052/131	1,50	615	10	85
708.056/131	2,00	615	7	100

Properties

- **Operations:** cutting, die-cutting, punching and printing possible
- **Folding:** folding without tearing around a diameter of 12.5 mm at a temperature of 20°C.
- **Temperature:** -40°C to 70°C.
- **Density:** 3.7 to 38.8 g/cm³

Magnetisation

Our flexible magnetic materials are magnetized in parallel poles along the length of the rolle with a distance of 2.0 mm between each pole.

Applications

As a very practical print media, magnetic sheeting can be used in all its shapes and colors. The most common applications include:

- POS display, trade shows
- marking (on vehicles and others)
- labeling.

